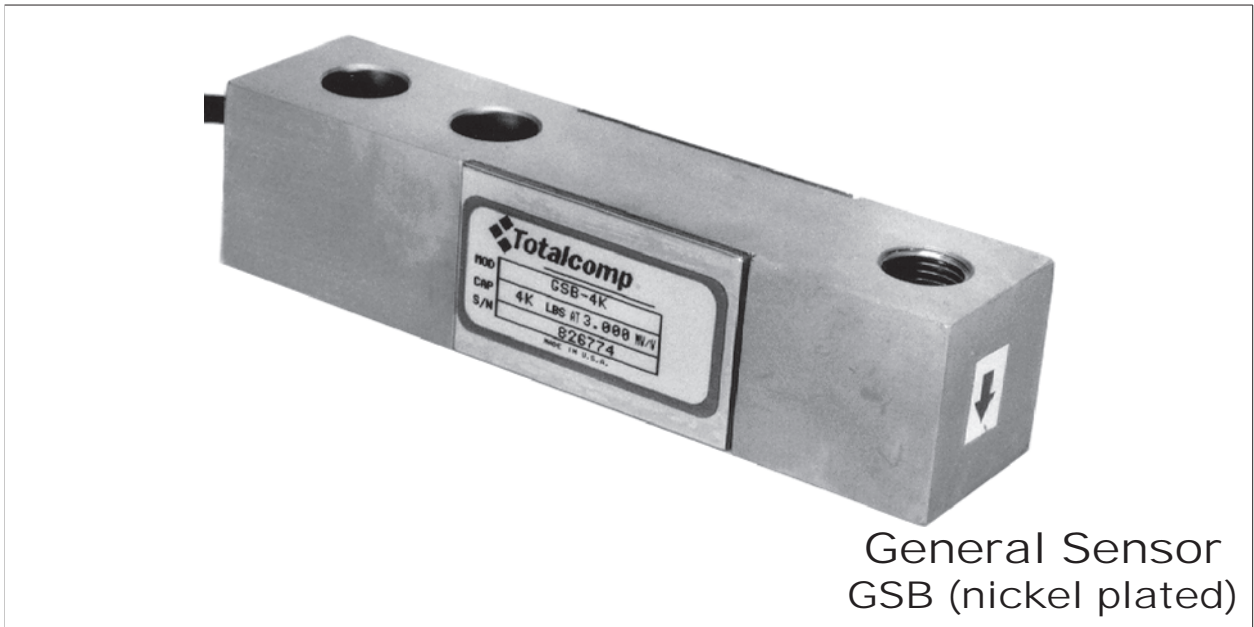


# GSB

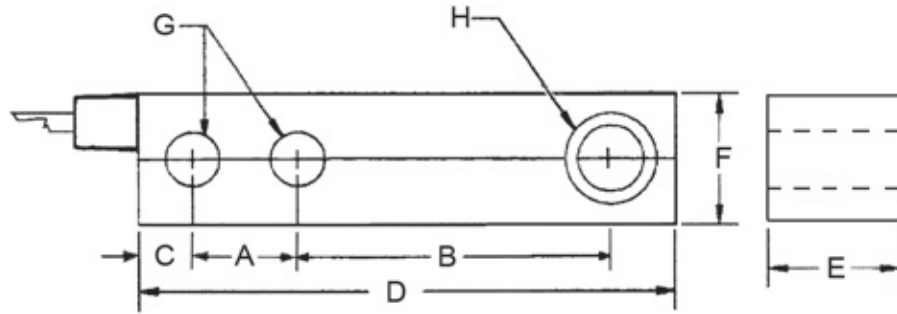


## General Sensor's Rectangular Beam Load Cell is Perfect for Rugged Environments

- ✓ *Environmentally protected with waterproof seal.*
- ✓ *Reliable-Durable-Precise.*
- ✓ *Electroless nickel plated tool steel construction.*
- ✓ *Available in capacities from 250 - 20K lb.*
- ✓ *Unique overload protection.*



**Totalcomp**<sup>®</sup> Scales & Components



GSB

## Nickel Plated Rectangular Beam Load Cell

Part Number	Capacity	Weight	A	B	C	D	E	F	G	H
GSB-250*	250 lb	3 lb	1.00	3.00	0.60	5.12	1.00	1.00	0.53	1/2-20
GSB-500*	500 lb	3 lb	1.00	3.00	0.60	5.12	1.25	1.25	0.53	1/2-20
GSB-1K	1,000 lb	3 lb	1.00	3.00	0.60	5.12	1.25	1.25	0.53	1/2-20
						5.12				
GSB-1.5K	1,500 lb	3 lb	1.00	3.00	0.60		1.25	1.25	0.53	1/2-20
GSB-2K	2,000 lb	3 lb	1.00	3.00	0.60	5.12	1.25	1.25	0.53	1/2-20
GSB-2.5K	2,500 lb	3 lb	1.00	3.00	0.60	5.12	1.25	1.25	0.53	1/2-20
						5.12				
GSB-4K	4,000 lb	3 lb	1.00	3.00	0.60		1.25	1.25	0.53	1/2-20
GSB-5K-SE	5,000 lb	3 lb	1.00	3.00	0.60	5.12	1.25	1.25	0.53	1/2-20
GSB-5K	5,000 lb	5 lb	1.50	3.75	0.75	6.75	1.50	1.50	0.78	3/416
GSB-10K	10,000 lb	5 lb	1.50	3.75	0.75	6.75	1.50	1.50	0.78	3/416
GSB-15K*	15,000 lb	9 lb	2.00	4.88	1.00	8.75	2.00	2.00	1.03	1-14
GSB-20K*	20,000 lb	9 lb	2.00	4.88	1.00	8.75	2.00	2.00	1.03	1-14
<b>Larger envelope w/ 1-1/4" height rather than 1" for 100 lb – 500 lb</b>										
GSB-100-L*	100 lb	3 lb	1.00	3.00	0.60	5.12	1.25	1.25	0.53	1/2-20
GSB-250-L*	250 lb	3 lb	1.00	3.00	0.60	5.12	1.25	1.25	0.53	1/2-20
GSB-500-L*	500 lb	3 lb	1.00	3.00	0.60	5.12	1.25	1.25	0.53	1/2-20

\*Not NTEP

### Performance

#### Full Scale Output

3.0 mv/v  $\pm$  0.25%

#### Combined Error

$\pm$  0.03% FS

#### Nonlinearity

$\pm$  0.03% FS

#### Hysteresis

$\pm$  0.03% FS

#### Creep

$\pm$  0.02% FS in 1 hour

#### Non-Repeatability

$\pm$  0.01% FS

#### Zero Balance

$\pm$  1.0% FS

#### Overload Safe

150% FS

#### Overload Ultimate

300% FS

#### Electrical

#### Bridge Resistance

Input 420 ohms  $\pm$  10%

Output 350 ohms  $\pm$  3 ohms

#### Excitation Voltage

10VDC (15VDC Max)

#### Insulation Resistance

10KMohms@50VDC

#### Temperature

#### Compensated Range

-10°C to +40°C

#### Operating Range

15°F to +150°F

#### Effect on Zero Balance

0.0013% FS/deg F

#### Effect on FS Output

0.0007% FS/deg F

### Mechanical

#### Material

Electroless  
Nickel Plated

#### Sealing

IP67

### Wiring

#### Cable Length & Type

20 foot, 4 conductor

#### Cable Color Code

+ Excitation.....Red  
- Excitation.....Black  
+ Output.....Green  
- Output.....White  
Shield.....Yellow

### TOTALCOMP LIMITED WARRANTY

Totalcomp warrants this product to be free of defects in materials and/or workmanship and suitable for the purpose(s) intended as outlined on this sheet. This warranty is effective and shall cover the purchaser for one year from the date of shipment from our plant. If this product is found to be defective by our inspection in accordance with the above listed criteria, we will replace or repair it at our expense. For warranty service, please obtain a return authorization number from us and return the item, shipping prepaid, with a written description of the problem. We will respond promptly with the results of our evaluation.



# Totalcomp<sup>®</sup>

## Scales & Components

99 Reagent Lane

Fair Lawn, NJ 07410

Fax (201) 797-2287

Toll Free Fax (888) 797-2288

Phone (201) 797-2718

Toll Free Phone (800) 631-0347

Email sales@totalcomp.com

Website www.totalcomp.com