

TB745

BEAM LOAD CELL



Hermetically Sealed Stainless Steel Beam Load Cells

- ✓ *Washdown safe.*
- ✓ *Low profile design.*
- ✓ *Hermetically sealed.*
- ✓ *Capacities from 500 lbs to 10K lbs.*
- ✓ *Stainless steel construction.*
- ✓ *Interchangeable with Toledo for 745 mount beam cells.*

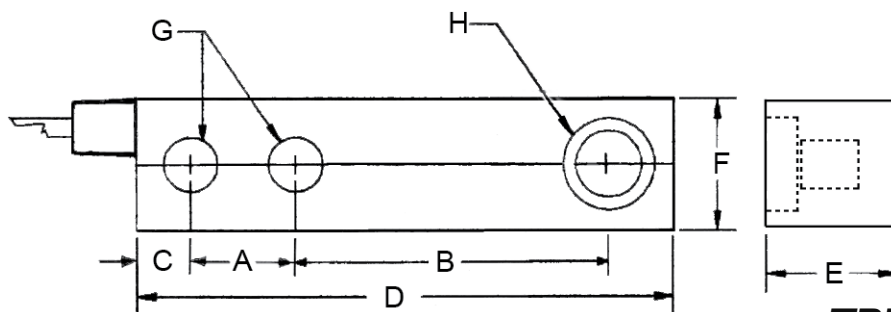


Totalcomp[®] Scales & Components

99 Reagent Lane • Fair Lawn, New Jersey 07410

Fax: 201-797-2287 • Toll Free Fax: 888-797-2288 • Phone: 201-797-2718 • Toll Free Phone: 800-631-0347

Email: sales@totalcomp.com • Website: www.totalcomp.com



TB745

TB745 TOTALCOMP BEAM LOAD CELL

The *Totalcomp* TB745 series beam load cells are interchangeable with Toldeo beam load cells for 745 mount. They are built to meet or exceed all manufacturers specs for this type of cell. They are constructed from Stainless Steel for washability and protection from harsh environments.

| Part Number | Capacity | Weight | A | B | C | D | E | F | G | H |
|------------------------------------|-----------|--------|------|------|------|------|------|------|-------|------|
| TB745-500-SS | 500 lb | 3 lb | 1.00 | 3.00 | 0.62 | 5.18 | 1.10 | 1.19 | 0.515 | .950 |
| TB745-1K-SS | 1,000 lb | 3 lb | 1.00 | 3.00 | 0.62 | 5.18 | 1.10 | 1.19 | 0.515 | .950 |
| TB745-1.25K-SS | 1,250 lb | 3 lb | 1.00 | 3.00 | 0.62 | 5.18 | 1.10 | 1.19 | 0.515 | .950 |
| TB745-2.5K-SS | 2,500 lb | 3 lb | 1.00 | 3.00 | 0.62 | 5.18 | 1.10 | 1.19 | 0.515 | .950 |
| TB745-2.5K-SS-30 w/ 30 ft cable | 2,500 lb | 5 lb | 1.00 | 3.00 | 0.62 | 5.18 | 1.10 | 1.19 | 0.515 | .950 |
| TB745-4K-SS | 4,000 lb | 3 lb | 1.00 | 3.00 | 0.62 | 5.18 | 1.10 | 1.19 | 0.515 | .950 |
| TB745-5K-SS | 5,000 lb | 4 lb | 1.50 | 3.75 | 0.62 | 6.65 | 1.63 | 1.45 | 0.780 | 1.37 |
| TB745-10K-SS | 10,000 lb | 6 lb | 1.50 | 3.75 | 0.62 | 6.75 | 1.63 | 1.65 | 0.75 | 1.37 |

Performance

Full Scale Output
2.00 mV/V

Combined Error
±0.03% FS

Nonlinearity
±0.03% FS

Hysteresis
±0.03%

Creep
±0.03% FS in 1 hour

Non-Repeatability
±0.01% FS

Zero Balance
±1.0% FS

Overload Safe
150% FS

Overload Ultimate
300% FS

Electrical

Bridge Resistance
Input 390 ohms
Output 350 ohms

Excitation Voltage
5 VDC (15VDC Max)

Insulation Resistance
5KMohms@50VDC

Temperature

Compensated Range
-10°C to +40°C

Temperature Operating Range
-40°C to +80°C

Effect on Zero Balance
0.0013% FS/deg F

Effect on FS Output
0.0007% FS/deg F

Mechanical

Material
Stainless Steel

Finish
Aluminum Oxide

Sealing
IP67

Wiring

Cable Length & Type
4 conductor
500 lb - 15 ft
1k - 20 ft
1.25 k - 10 k - 15 ft
2.25 k-30 - 30 ft

Cable Color Code

+ Excitation.....Green
- Excitation.....Black
+ Output.....White
- Output.....Red
Shield.....Yellow

TOTALCOMP LIMITED WARRANTY

Totalcomp warrants this product to be free of defects in materials and/or workmanship and suitable for the purpose(s) intended as outlined on this sheet. This warranty is effective and shall cover the purchaser for one year from the date of shipment from our plant. If this product is found to be defective by our inspection in accordance with the above listed criteria, we will replace or repair it at our expense. For warranty service, please obtain a return authorization number from us and return the item, shipping prepaid, with a written description of the problem. We will respond promptly with the results of our evaluation.



Totalcomp[®]

Scales & Components

99 Reagent Lane

Fair Lawn, NJ 07410

Fax (201) 797-2287

Toll Free Fax (888) 797-2288

Phone (201) 797-2718

Toll Free Phone (800) 631-0347

Email sales@totalcomp.com

Website www.totalcomp.com