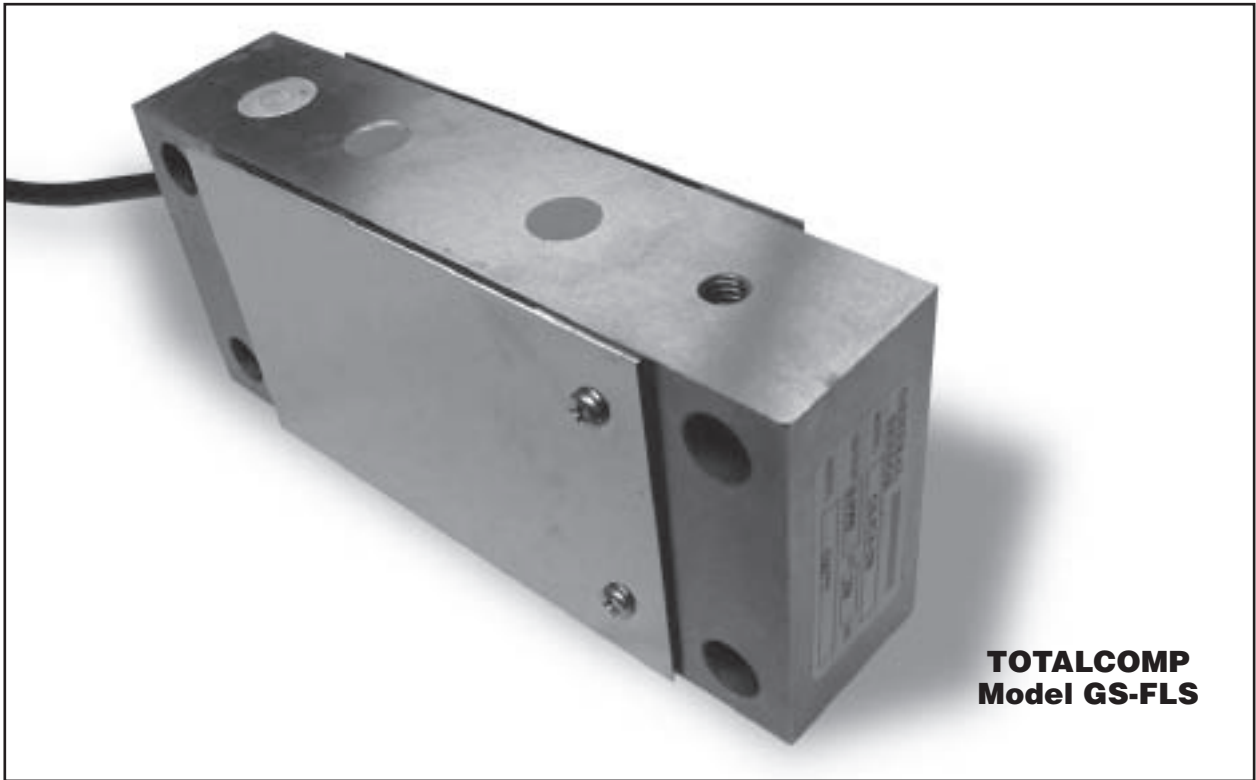


GS-FLS

SINGLE POINT LOAD CELL



**TOTALCOMP
Model GS-FLS**

Reliable-Durable-Precise Single Point Load Cells from Totalcomp.

- ✓ **Stainless Steel housing.**
- ✓ **IP67 Sealed.**
- ✓ **Interchangeable with Weigh-Tronix® FLS single point load cell.**
- ✓ **Capacities from 30 lbs to 1.25k lbs.**
- ✓ **10 foot, four conductor cable.**

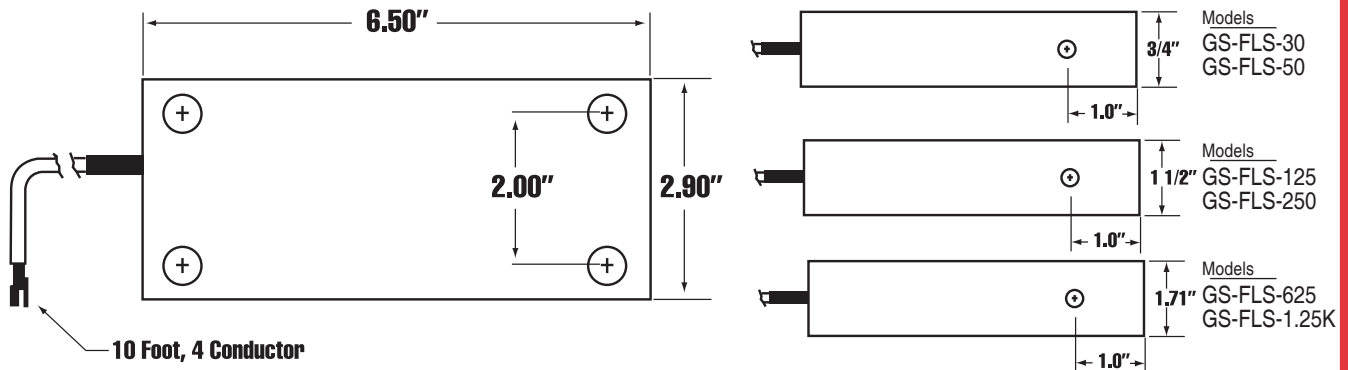


Totalcomp® Scales & Components

99 Reagent Lane • Fair Lawn, New Jersey 07410

Fax: 201-797-2287 • Toll Free Fax: 888-797-2288 • Phone: 201-797-2718 • Toll Free Phone: 800-631-0347

Email: sales@totalcomp.com • Website: www.totalcomp.com



Model GS-FLS

SINGLE POINT LOAD CELL

The *Totalcomp* GS-FLS Series single point load cells are interchangeable with Weigh-Tronix® FLS single point load cells. It's manufactured from Stainless Steel with IP67 sealant. Compact Design. Four mounting holes.

Part Number	Capacity	Weight
GS-FLS-30	30 lb	4 lb
GS-FLS-50	50 lb	4 lb
GS-FLS-125	125 lb	6 lb
GS-FLS-250	250 lb	7 lb
GS-FLS-625	625 lb	9 lb
GS-FLS-1.25K	1,250 lb	9 lb

Performance

Full Scale Output
 1.00+/-10% mV/V
Combined Error
 ±0.03% FS
Nonlinearity
 ±0.02% FS
Hysteresis
 ±0.02%
Creep
 ±0.02% FS in 1 hour
Non-Repeatability
 ±0.01% FS
Zero Balance
 ±1% FS

Overload, Safe
 200% FS

Overload, Ultimate
 300% FS

Electrical

Bridge Resistance
 Input 385 ohms
 Output 350 ohms
Excitation Voltage
 10VDC (15VDC Max)
Insulation Resistance
 10KMohms@50VDC

Temperature

Compensated Range
 -10°C to +40°C
Temperature Operating Range
 -16°C to +65°C
Effect on Zero Balance
 0.0013% FS/deg F
Effect on FS Output
 0.0007% FS/deg F

Mechanical

Material
 Stainless Steel
Finish
 Polished SS
Sealing
 IP67

Wiring

Cable Length & Type
 10 foot, 4 conductor

Cable Color Code

+ Excitation Green
 - Excitation Black
 + Output White
 - Output Red
 Shield Bare

TOTALCOMP LIMITED WARRANTY

Totalcomp warrants this product to be free of defects in materials and/or workmanship and suitable for the purpose(s) intended as outlined on this sheet. This warranty is effective and shall cover the purchaser for one year from the date of shipment from our plant. If this product is found to be defective by our inspection in accordance with the above listed criteria, we will replace or repair it at our expense. For warranty service, please obtain a return authorization number from us and return the item, shipping prepaid, with a written description of the problem. We will respond promptly with the results of our evaluation.



Totalcomp®

Scales & Components

99 Reagent Lane
Fair Lawn, NJ 07410
Fax (201) 797-2287
Toll Free Fax (888) 797-2288
Phone (201) 797-2718
Toll Free Phone (800) 631-0347
Email sales@totalcomp.com
Website www.totalcomp.com