



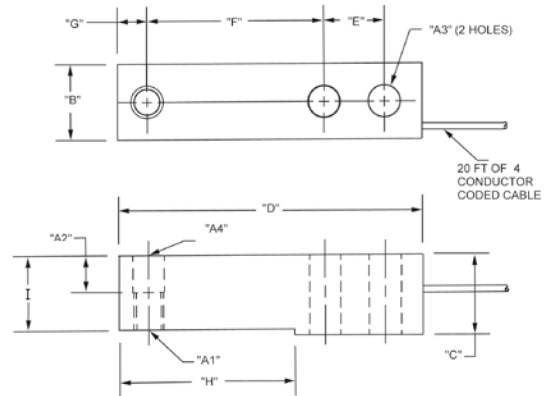
H35

Single-Ended Beam, Stainless Steel NTEP 1:5000 Welded-Seal, IP67

HBM



Picture is a representation of actual product



Specifications

Full Scale Output: 3.0mV/V	Safe Overload: 150% Full scale	Insulation Resistance: 5000 megohms	Cable Color Code: Green+ Excitation Black.....- Excitation White+ Signal Red- Signal Yellow Shield
Output Resistance: 350 ohms +/- 3	Safe Sideload: 100% Full scale	Seal Type: Welded-seal, IP67	Warranty: One-year limited warranty
Input Resistance: >350	Rated Excitation: 10V DC (15V maximum)	Cable Length: 20ft/6.1m	
Material/Finish: Stainless steel	Nonlinearity: 0.03% Full scale	Cable Diameter: .190 polyurethane jacket	
Temperature: Compensated range 14°F to 104°F/-10°C to 40°C	Hysteresis: 0.03% Full scale		

Dimensions

RATED CAPACITY	A1	A2	A3	A4	B	C	D	E	F	G	H	I
lb/inches												
500-5000	1/2-20 UNF-2B	.62	.53	.53	1.21	1.19	5.12	1.00	3.00	.50	2.85	1.120
kg/mm												
453.6-2268	1/2-20 UNF-2B	15.8	13.5	13.5	30.7	30.2	130.05	25.4	76.2	12.7	72.4	28.4

Order Information

LOAD RATING	
500 lb	(226.8 kg)
1,000 lb	(453.6 kg)
2,500 lb	(1134.0 kg)
4,000 lb	(1814.4 kg)
5,000 lb	(2268.0 kg)

Scales & Weighing Solution LLC

Ph.:201-674-5761

<https://theloadcelldepot.com>

www.ricelake.com | Phone: 800-472-6703

